

Pride Through Performance

FLEMING AND SONS

(888) 266-PUMP • (714) 550-7081

SERVING CALIFORNIA, ARIZONA, NEVADA, AND IOWA

Putzmeister
WORLD'S LARGEST
70Z-METER



Concrete Boom Pump and
Telebelt® Specifications
ACPA Certified Operators



PO Box 1854 • Santa Ana, CA 92702
www.flemingandsons.net

Specifications subject to change without prior notice.



Specifications

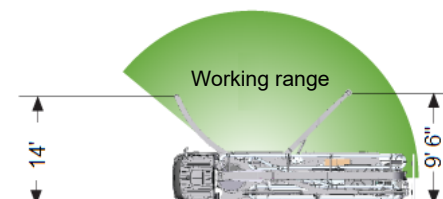
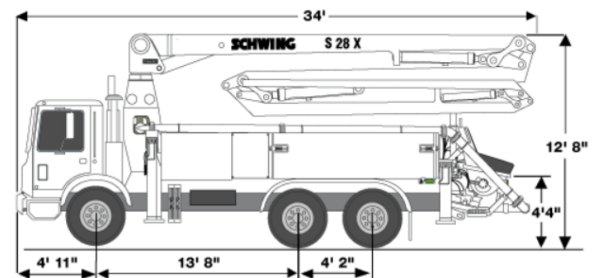
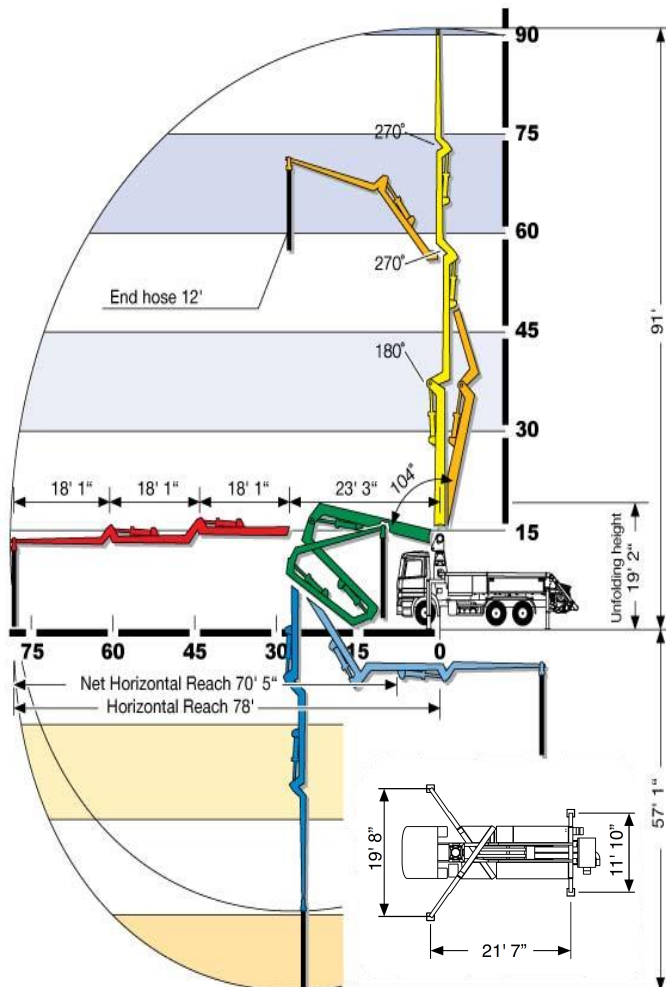
Pipeline Diameter	5"
Vertical Reach	90' 11"
Net Horizontal Reach	70' 5"
Below Grade Reach w/Tip Hose	57' 1"
Unfolding Height	19' 2"
Boom Rotation	370°
Section Length	
1st section length	23' 3"
2nd section length	18' 1"
3rd section length	18' 1"
4th section length	18' 1"
Slewing Range	370°
End Hose Length	12'

Specifications are subject to change without prior notice.

Pump Specifications

Theor. Concrete Output(rod/piston)	208/131 yd ³
Max Pressure on Concrete (rod/piston)	100/70 psi
Max Strokes per Minute (rod/piston)	32/32
Max Aggregate size	1.5"
Material Cylinder Diameter	9"
Material Cylinder Stroke	79"
Differential Cylinder Diameter	5.1"
Maximum Oil Flow	132.1 gal/min
Hydraulic Circuitry Type	MPS
Valve Type	M Rock

Specifications are subject to change without prior notice.





Specifications

Vertical Reach	104' 11"
Horizontal Reach	91' 11"
Below Grade Reach w/Tip Hose	67' 5"
Pipeline Diameter	5"
Boom Type/Sections	Overhead Roll & Fold/4
Boom Rotation	370°
Unfolding Height	24' 9"

Outrigger Type-Front:

X Outriggers, Fully Hydraulic, Extension & Jacking

Outrigger Type-Rear:

Hydraulic Slewing & Jacking

Outrigger Soil Pressure w/o Dunnage (front/rear)

234/138 psi

Outrigger Soil Pressure w/ Dunnage (front/rear)

57/47 psi

Outrigger Width, Front

20' 5"

Outrigger Width, Rear

18' 8"

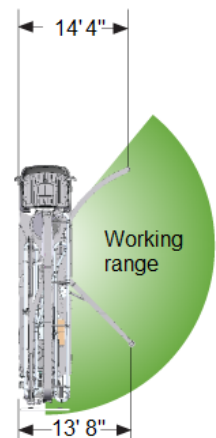
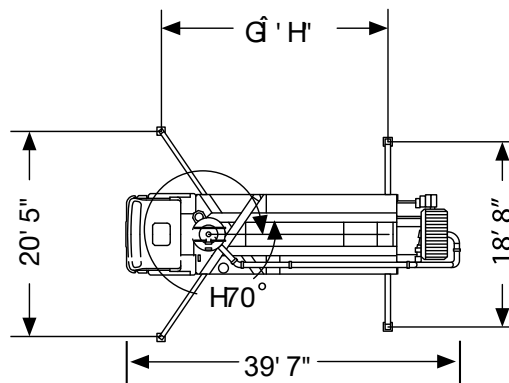
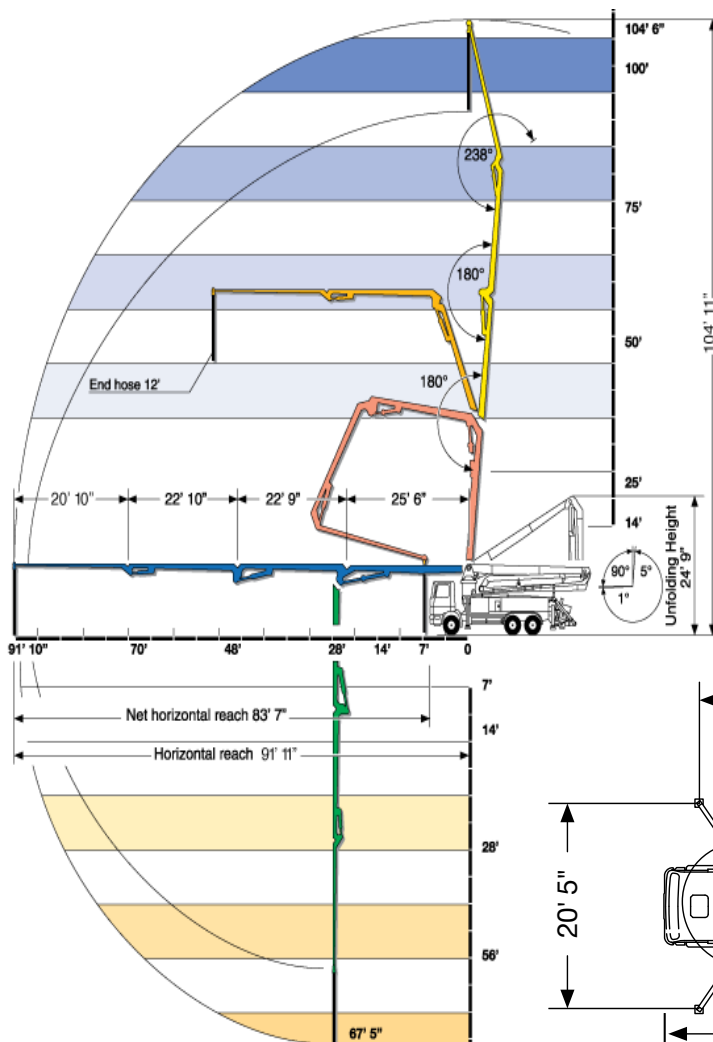
Outrigger Length

25' 11"

Pump Specifications

Theor. Concrete Output	208 yd ³ /hr
Max. Pressure on Concrete	1007 psi
Max. Strokes Per Minute	32
Max. Aggregate Size	1.5"
Material Cylinder Diameter	9"
Material Cylinder Stroke	79"
Differential Cylinder Diameter	5.1"
Maximum Oil Flow	132.1 gal/min
Hydraulic Circuitry Type	MPS
Valve Type	M Rock

Specifications are subject to change without prior notice.





Model Overview

Vertical reach	104' 6"
Horizontal reach	91' 10"
Reach from front of truck	84' 2"
Reach depth	64' 10"
Unfolding height	25' 3"
Front axle weight	19,535 lbs
Rear axle weight	34,675 lbs
Approx total weight	54,210 lbs

Specifications subject to change without notice. Based on Model MACK MR 688S with .16H pump cell.

Boom Specifications • Multi-Z Design

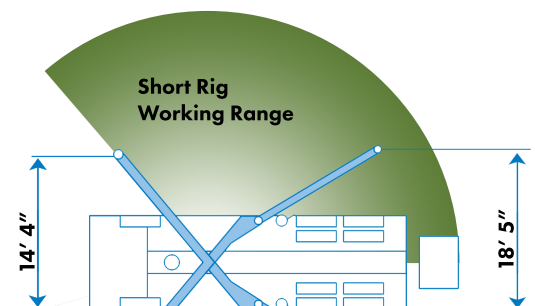
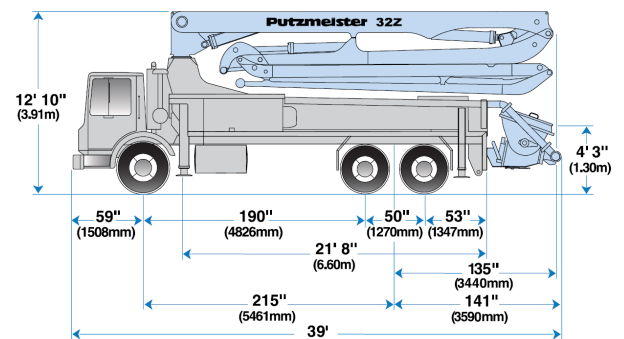
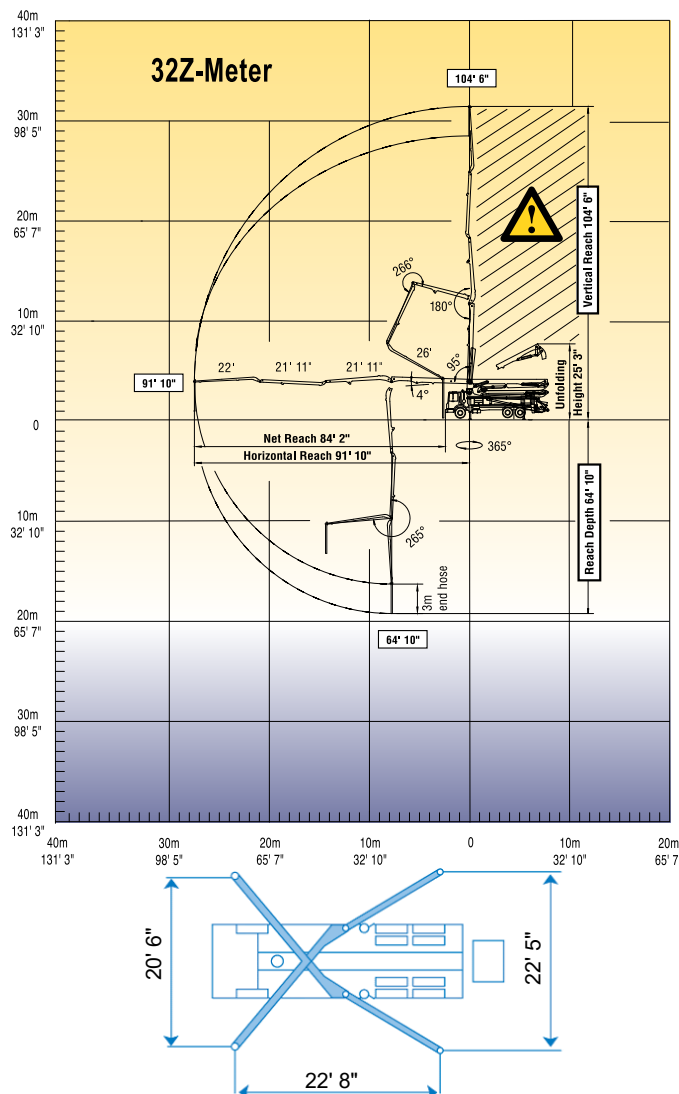
1st section length	26' 0"
2nd section length	21' 11"
3rd section length	21' 11"
4th section length	22' 0"
Maximum end hose weight allowance	365 lbs
Maximum end hose length	13' 1"

PMA provides 3m single end hose. Follow end hose weight guidelines listed in operational manual.

.16H Pump Cell

Rod side output	210 yd ³ /hr
Piston side output	146 yd ³ /hr
Rod side pressure	1233 psi
Piston side pressure	1885 psi*
Concrete cylinder diameter	9"
Stroke length	83"
Rod side strokes per minute	31
Piston side strokes per minute	21

*Standard delivery line system rated at max line pressure 1233 psi.





Specifications

Vertical Reach	115' 6"
Horizontal Reach	102' 6"
Below Grade Reach w/ Tip Hose	78' 9"
Pipeline Diameter	5"
Boom Type/ Sections	Full Articulation Roll & Fold/4
Boom Rotation	370°
Unfolding Height	27' 4"

Outrigger Type-Front:

X Outriggers, Fully Hydraulic, Extension & Jacking

Outrigger Type-Rear:

Hydraulic Slewing & Jacking

Outrigger Soil Pressure w/o Dunnage (front/rear)

419/331 psi

Outrigger Soil Pressure w/ Dunnage (front/rear)

76/60 psi

Outrigger Width, Front

20' 5"

Outrigger Width, Rear

18' 8"

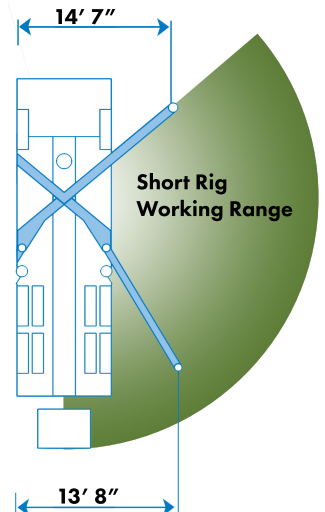
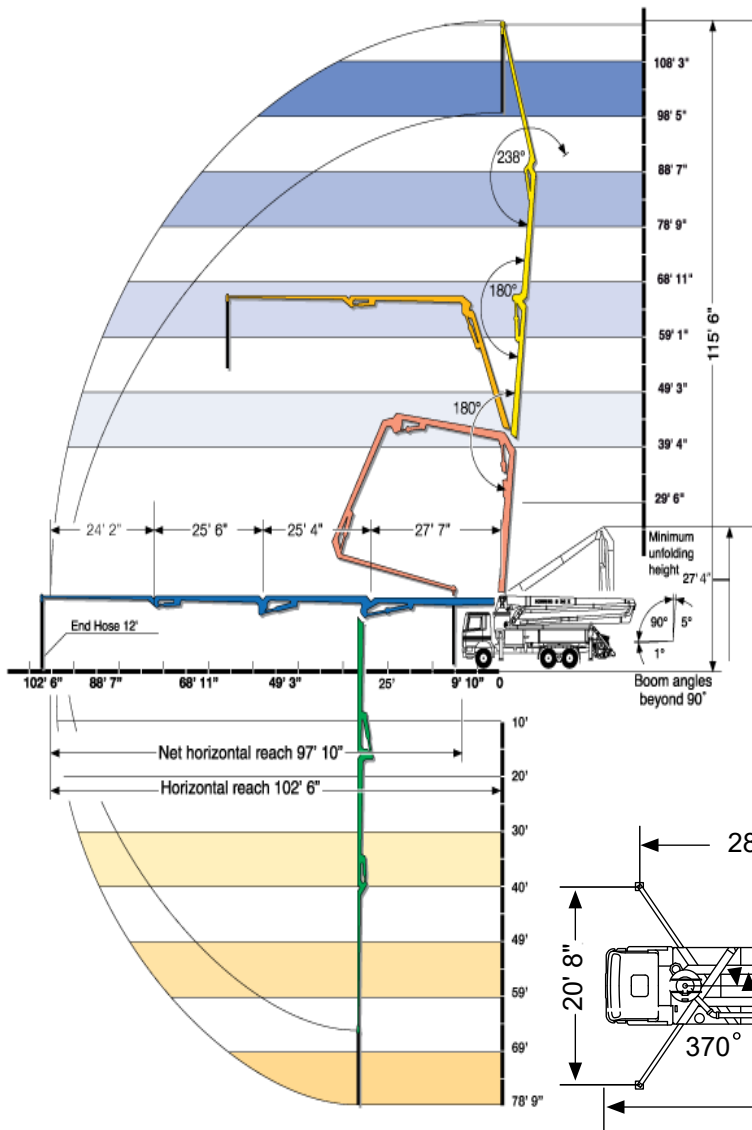
Outrigger Length

28'

Pump Specifications - 2025-5 120/80 MPS

Theor. Concrete Output	178 yd ³ /hr
Max. Pressure on Concrete	1002 psi
Max. Strokes Per Minute	24
Max. Aggregate Size	2.5"
Material Cylinder Diameter	10"
Material Cylinder Stroke	79"
Differential Cylinder Diameter	4.7"
Maximum Oil Flow	132.1 gal/min
Hydraulic Circuitry Type	MPS
Valve Type	B Rock

Specifications are subject to change without prior notice.





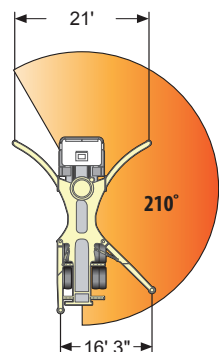
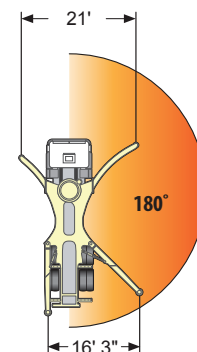
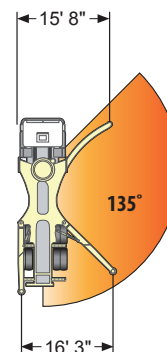
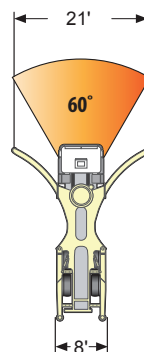
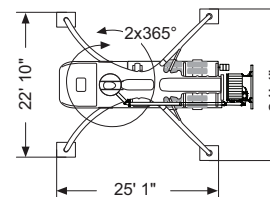
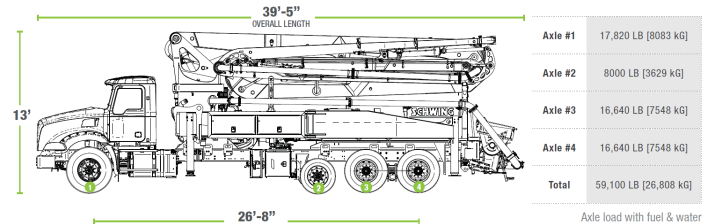
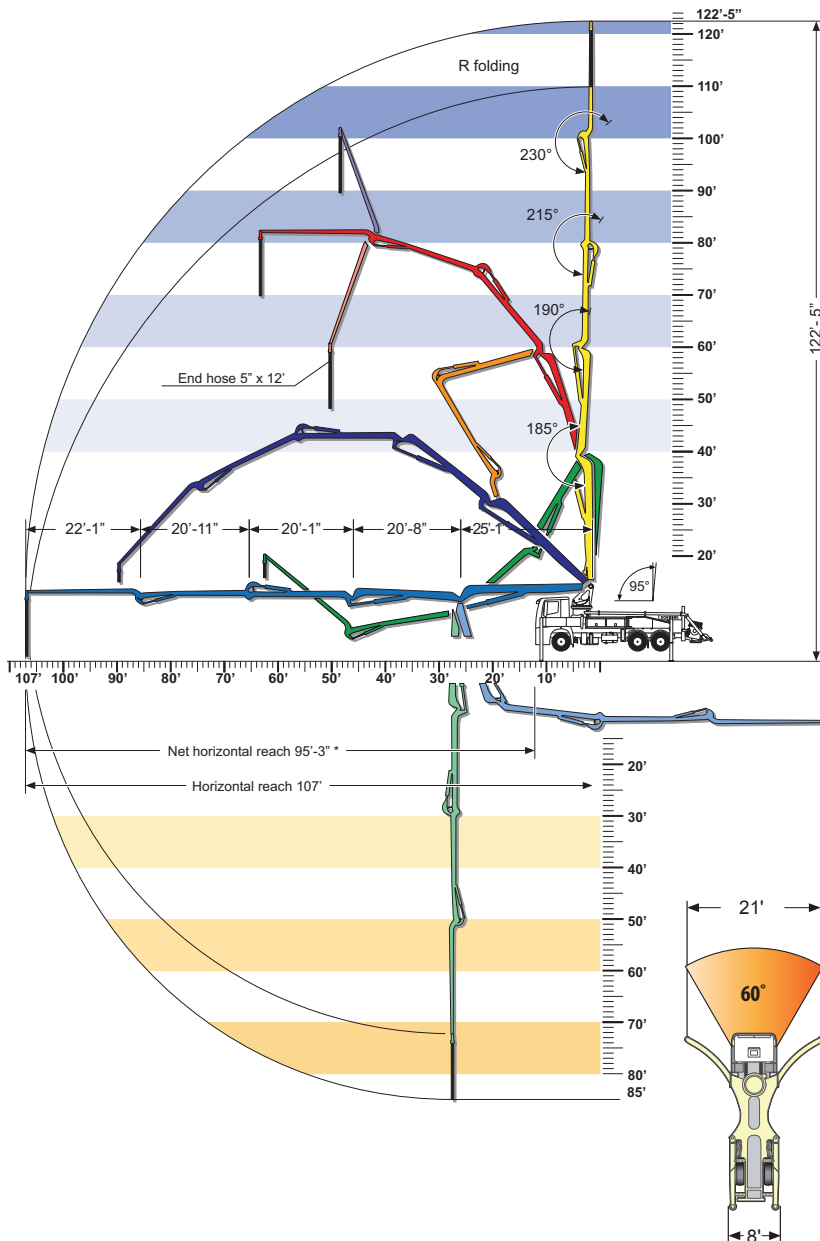
Specifications

Vertical Reach	122' 5"
Net Horizontal Reach	107'
Below Grade Reach w/ Tip Hose	85'
Unfolding Height	24' 4"
Boom Type	5-Sec Hyper Ext
Boom Rotation	370°
Outrigger Width, Front	22' 10"
Outrigger Width, Rear	23' 11"

Pump Specifications

Max. Pressure on Concrete	1094 psi
Max. Strokes Per Minute	27
Max. Aggregate Size	2.5"
Material Cylinder Diameter	9"
Material Cylinder Stroke	79"
Differential Cylinder Diameter	4.3"
Hydraulic Circuitry Type	MPS
Valve Type	M Rock

Specifications are subject to change without prior notice.



38Z-Meter

by Putzmeister



Model Overview

Vertical reach	123' 5"
Horizontal reach	110' 8"
Reach from front of truck	103' 2"
Reach depth	82' 2"
Unfolding height	28' 9"
Front axle weight	19,090 lbs
Rear axle weight	36,780 lbs
Approx total weight	55,870 lbs

Specifications subject to change without notice. Based on Model MACK MR 688S with .16H pump cell.

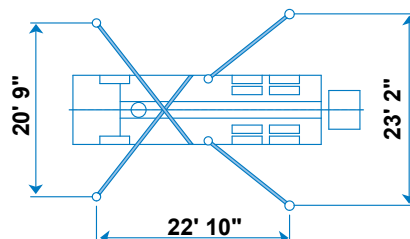
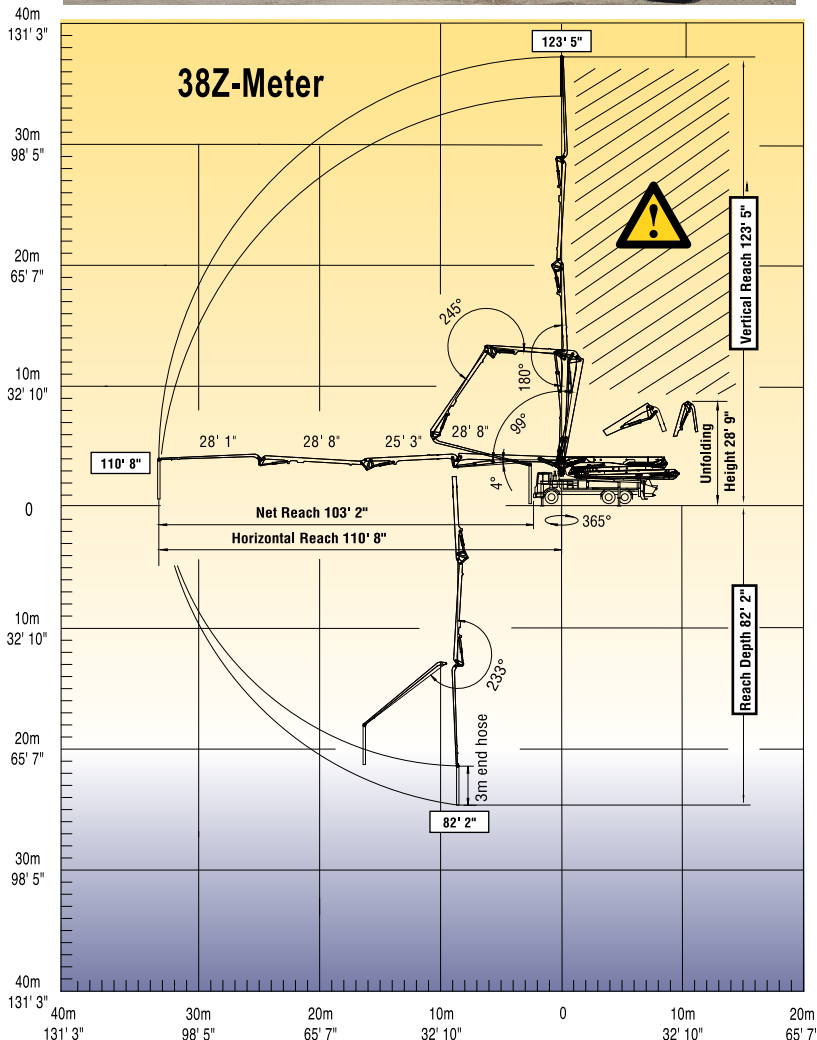
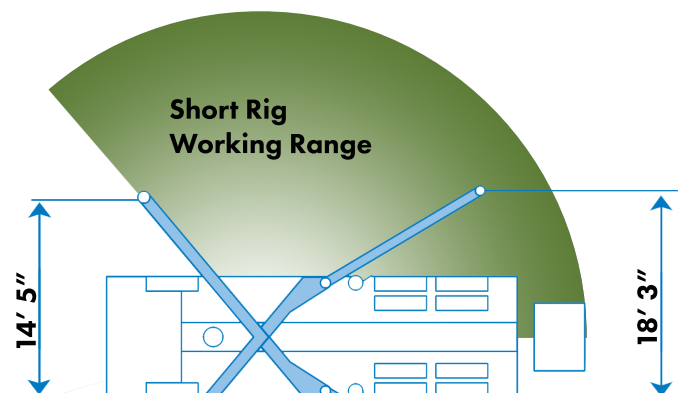
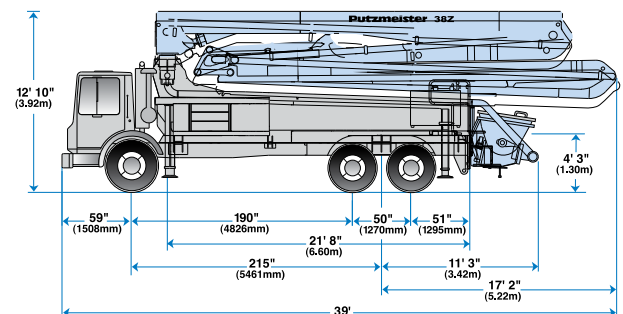
Boom Specifications • Multi-Z Design

1st section length	28' 8"
2nd section length	25' 3"
3rd section length	28' 8"
4th section length	28' 1"
Maximum end hose weight allowance	250 lbs
Maximum end hose length	10' 0"

PMA provides 3m single end hose. Follow end hose weight guidelines listed in operational manual.

.16H Pump Cell

Piston side output	200 yd ³ /hr
Piston side pressure	1233 psi
Concrete cylinder diameter	11"
Stroke length	83"
Piston side strokes per minute	26





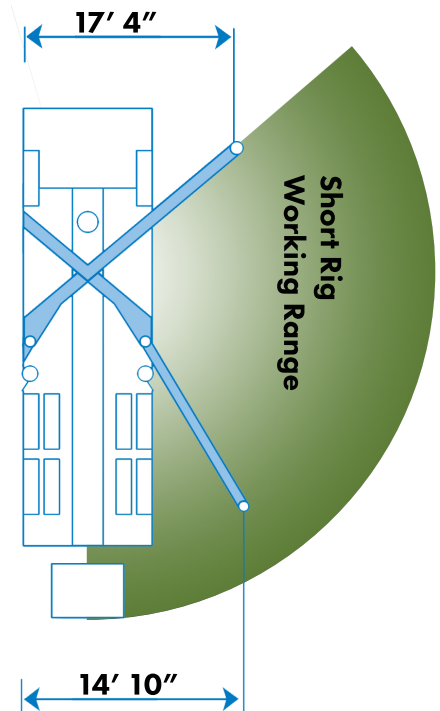
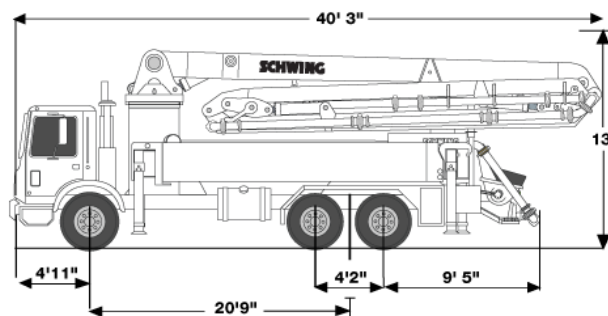
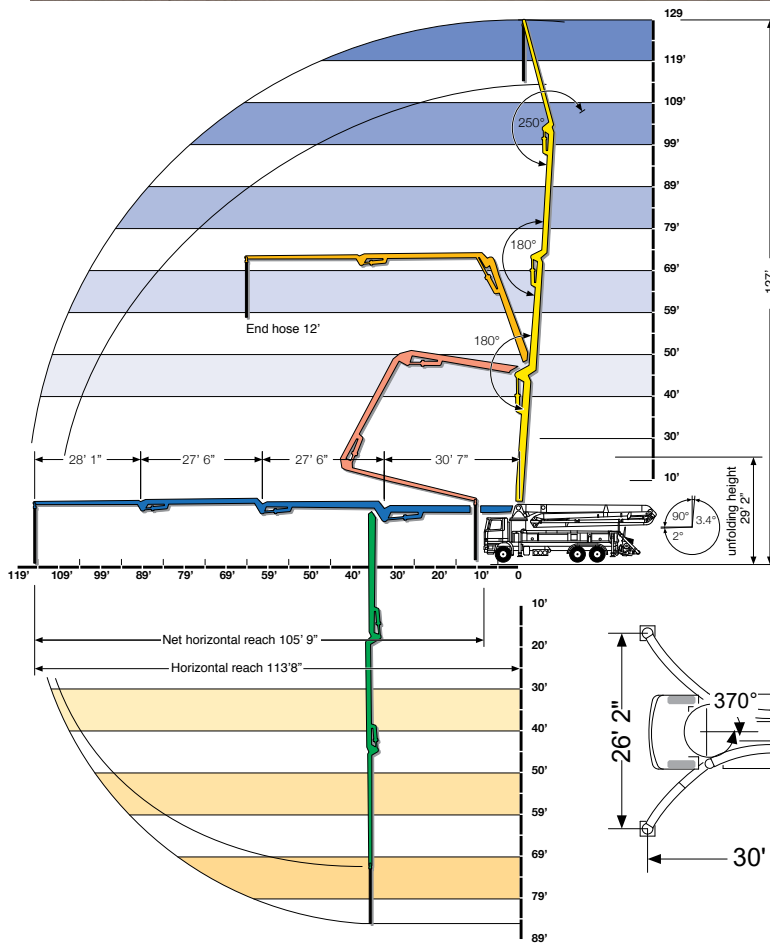
Specifications

Pipeline Diameter	5"
Vertical Reach	127'
Horizontal Reach	113' 8"
Below Grade Reach with Tip	89'
Hose Unfolding Height	29' 2"
Section Length	
First Section	30' 7"
2nd Section	27' 6"
3rd Section	27' 6"
4th Section	28' 1"
Slewing Range	550°
End Hose Length	12' 6"

Specifications are subject to change without prior notice.

Pump Specifications

Theor. Concrete Output	213 yd ³ /hr
Max Pressure on Concrete	1169 psi
Max Strokes per Minute	22
Max Aggregate Size	2.5"
Material Cylinder Diameter	10"
Material Cylinder Stroke	98"
Differential Cylinder Diameter	4.7"
Maximum Oil Flow	158.5 gal/min
Hydraulic Circuitry Type	MPS
Valve Type	B Rock



46SX-Meter

by SCHWING



Specifications

Vertical Reach	149' 7"
Horizontal Reach	136' 10"
Below Grade Reach w/Tip Hose	111'
Pipeline Diameter	5"
Boom Type/Sections	Overhead Roll & Fold/4
Boom Rotation	380°
Unfolding Height	39' 6"

Outrigger Type-Front: Super X, Hydraulic Slewing & Jacking

Outrigger Type-Rear: Hydraulic Slewing & Jacking

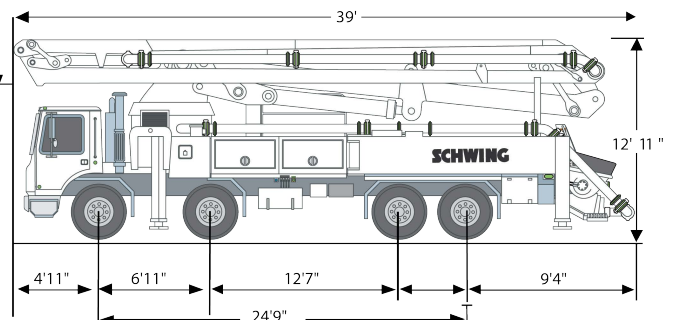
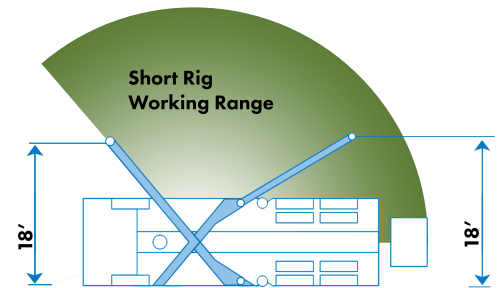
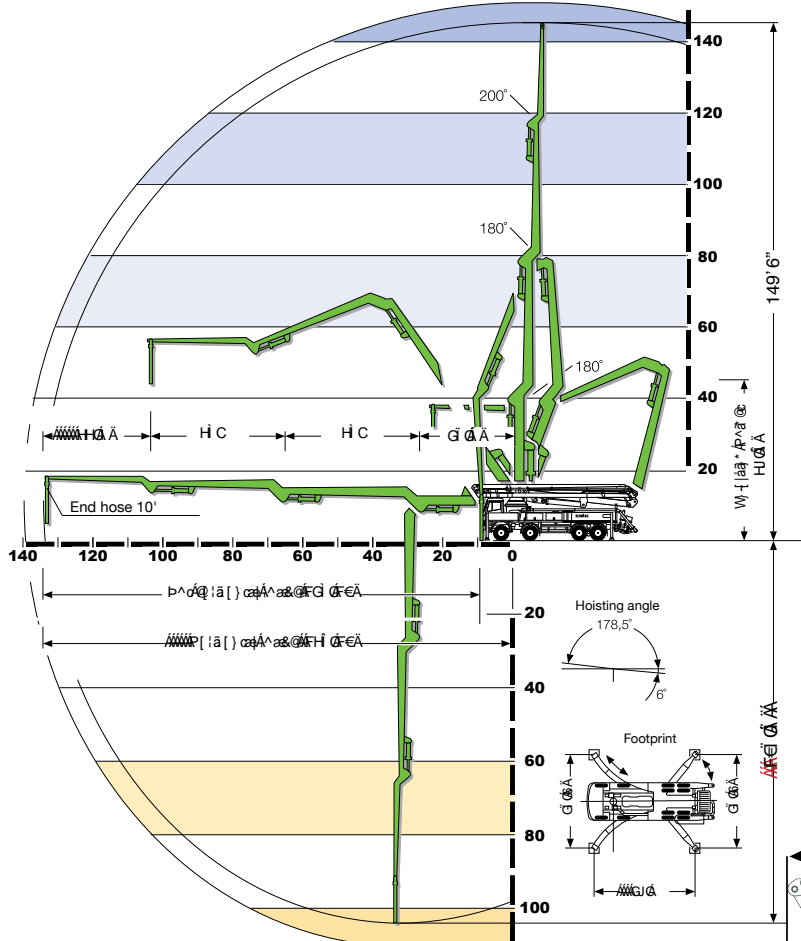
Outrigger Soil Pressure w/o Dunnage (front/rear)	367/353 psi
Outrigger Soil Pressure w/Dunnage (front/rear)	104/100 psi

Outrigger Width, Front	27' 3"
Outrigger Width, Rear	27' 3"
Outrigger Length	29'

Pump Specifications

Theor. Concrete Output	213 yd ³ /hr
Max. Pressure on Concrete	1169 psi
Max. Strokes Per Minute	22
Max. Aggregate Size	2.5"
Material Cylinder Diameter	10"
Material Cylinder Stroke	98"
Differential Cylinder Diameter	4.7"
Maximum Oil Flow	158.5 gal/min
Hydraulic Circuitry Type	MPS
Valve Type	B Rock

Specifications are subject to change without prior notice.



47Z-Meter

by Putzmeister



Model Overview

Vertical reach	151' 3"
Horizontal reach	138' 1"
Reach from front of truck	128' 2"
Reach depth	105' 8"
Unfolding height	31' 2"
Front axle weight	37,370 lbs
Rear axle weight	39,270 lbs
Approx total weight	76,640 lbs

Specifications subject to change without notice. Based on Model MACK MR 688S with .16H pump cell.

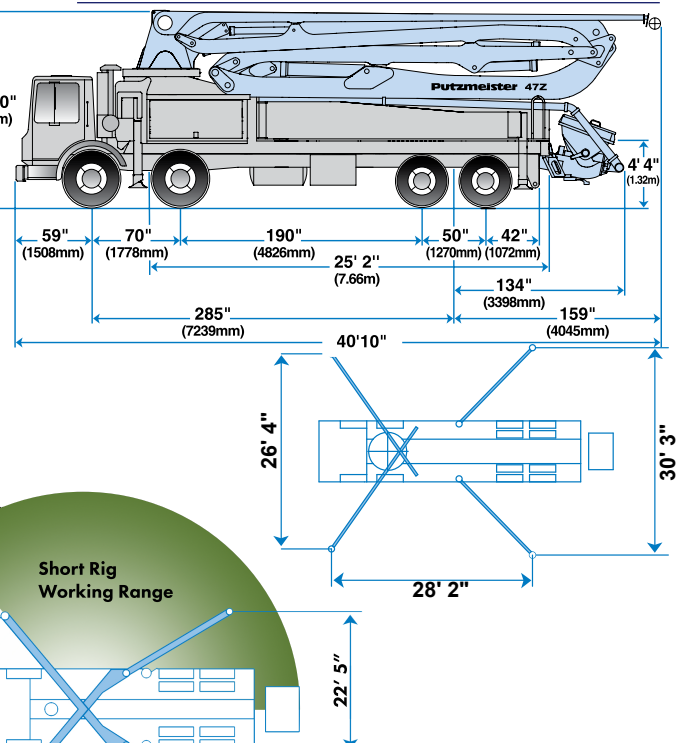
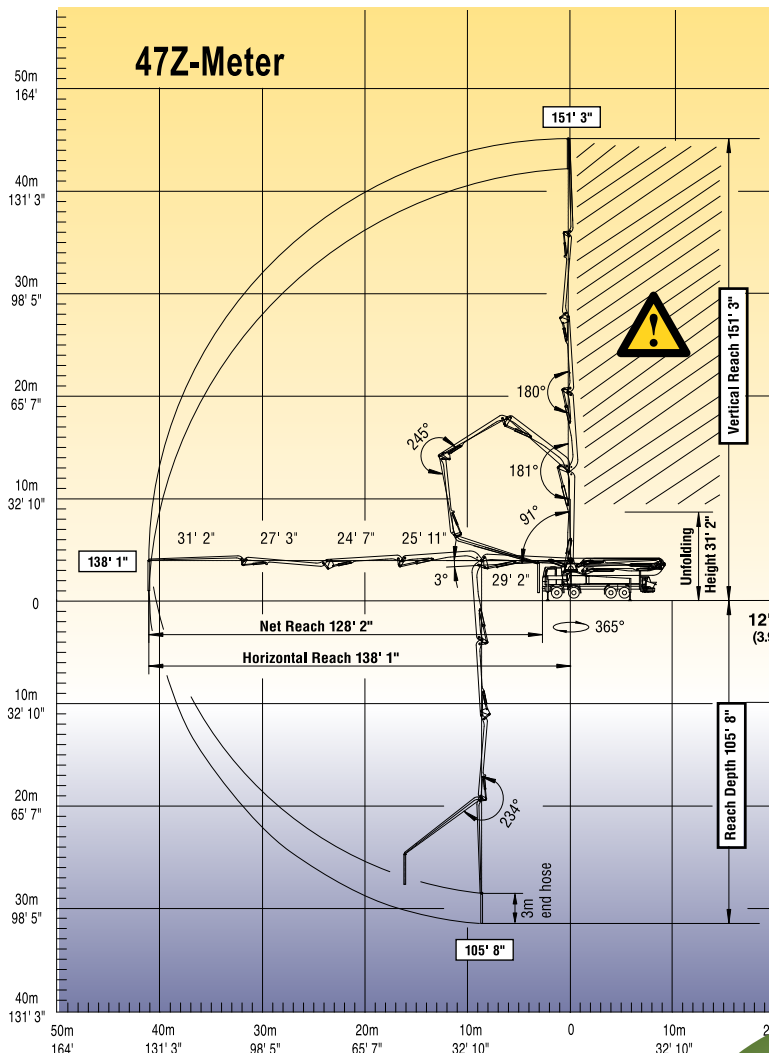
Boom Specifications • Z-Fold Design

1st section length	29' 2"
2nd section length	25' 11"
3rd section length	24' 7"
4th section length	27' 3"
5th section length	31' 2"
Maximum end hose weight allowance	250 lbs
Maximum end hose length	10' 0"

PMA provides a 3m single end hose. Follow end hose weight guidelines listed in operational manual.

.16H Pump Cell

Piston side output	200 yd ³ /hr
Piston side pressure	1233 psi
Concrete cylinder diameter	11"
Stroke length	83"
Piston side strokes per minute	26



56Z-Meter

by Putzmeister



Model Overview

Vertical reach	180' 10"
Horizontal reach	163' 10"
Reach from front of truck	152' 6"
Reach depth	132' 3"
Unfolding height	51' 3"
Front axle weight	52,773 lbs
Rear axle weight	48,747 lbs
Approx total weight	100,080 lbs

Specifications subject to change without notice. Based on Model MACK MRU 613 with .16H pump cell.

Boom Specifications • Z-Fold Design

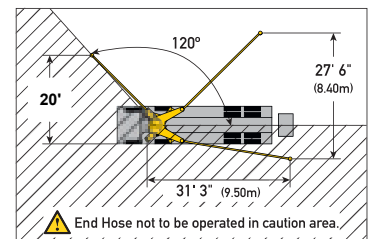
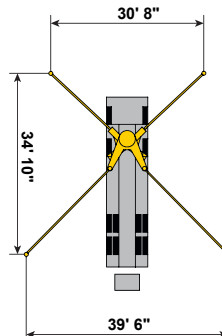
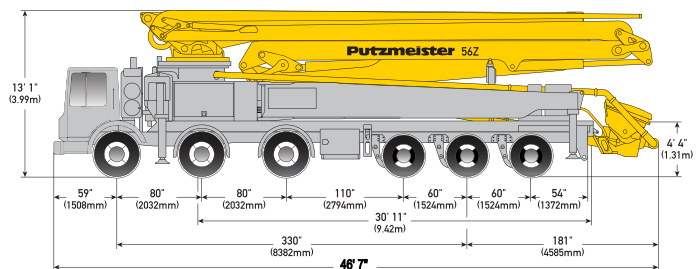
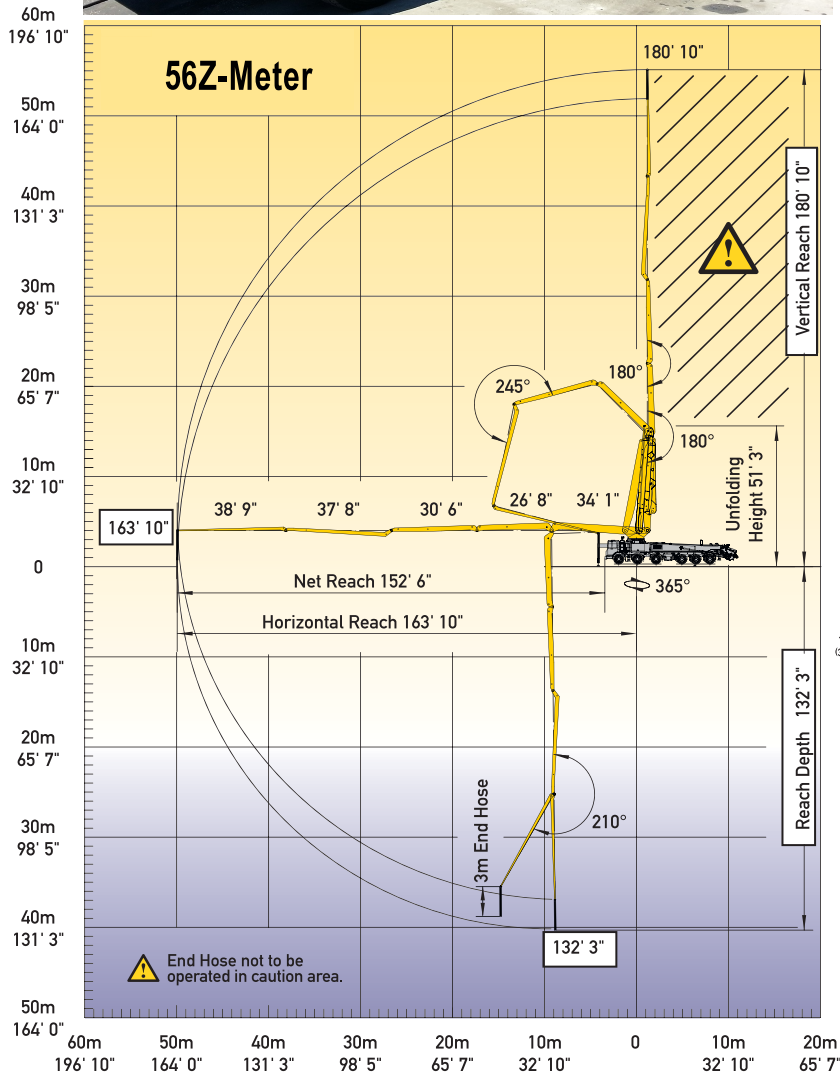
1st section length	34' 1"
2nd section length	26' 8"
3rd section length	30' 6"
4th section length	37' 8"
5th section length	38' 9"
Maximum end hose length	10' 0"

PMA provides a 3m single end hose. Follow end hose weight guidelines listed in operational manual.

.16H Pump Cell

Rod side output	210 yd ³ /hr
Piston side output	146 yd ³ /hr
Rod side pressure	1233 psi
Piston side pressure	1885 psi*
Concrete cylinder diameter	9"
Stroke length	83"
Rod side strokes per minute	31
Piston side strokes per minute	21

*Standard delivery line system rated at max line pressure 1233 psi. Maximum theoretical values listed



With One-Sided Support (OSS)



Specifications

Vertical Reach	187' 9"
Horizontal Reach	175' 2"
Below Grade Reach w/Tip Hose	141' 1"
Pipeline Diameter	5"
Boom Type/Sections	Overhead Roll & Fold/4
Boom Rotation	370°
Unfolding Height	56' 5"

Outrigger Type-Front:
Super X, Hydraulic Extension & Jacking

Outrigger Type-Rear:
Hydraulic Slewing & Jacking

Outrigger Soil Pressure w/o Dunnage (front/rear) 760/739 psi

Outrigger Soil Pressure w/Dunnage (front/rear) 67/65 psi

Outrigger Width, Front 29' 2"

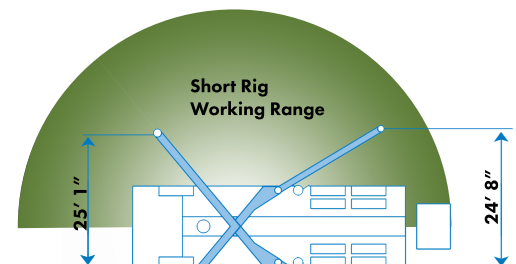
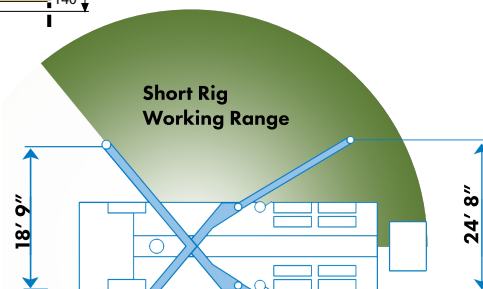
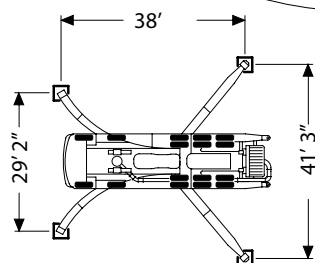
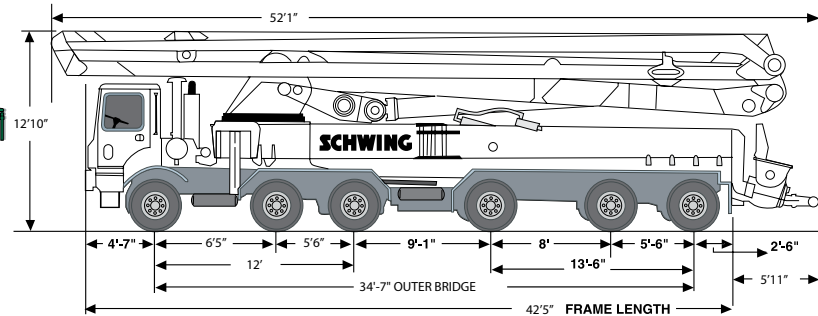
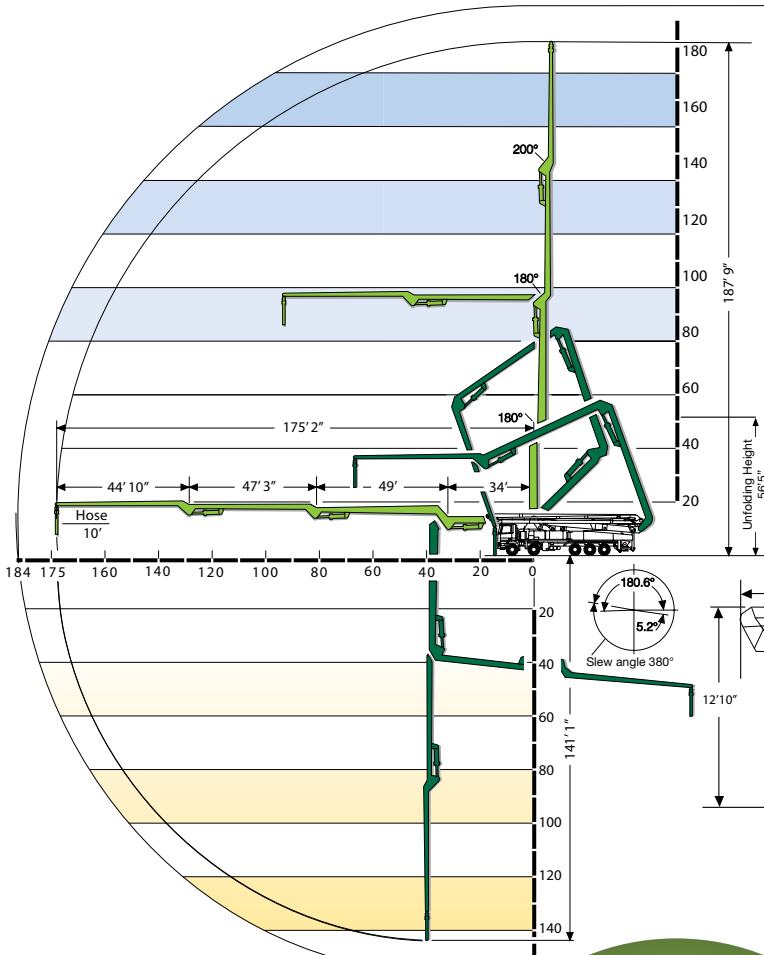
Outrigger Width, Rear 41'

Outrigger Length 37' 8"

Pump Specifications

Theor. Concrete Output	213 yd ³ /hr
Max. Pressure on Concrete	1169 psi
Max. Strokes Per Minute	22
Max. Aggregate Size	2.5"
Material Cylinder Diameter	10"
Material Cylinder Stroke	98"
Differential Cylinder Diameter	4.7"
Maximum Oil Flow	158.5 gal/min
Hydraulic Circuitry Type	MPS
Valve Type	B Rock

Specifications are subject to change without prior notice.





Model Overview

Vertical reach	197' 2"
Horizontal reach	183' 9"
Reach from front of truck	170' 9"
Reach depth	145' 4"
Unfolding height	54' 2"
Front axle weight	57,246 lbs
Rear axle weight	58,718 lbs
Approx total weight	115,964 lbs

Specifications subject to change without notice. Based on Model MACK MR 688S with .16H pump cell.

Boom Specifications • Roll-and-Fold Design

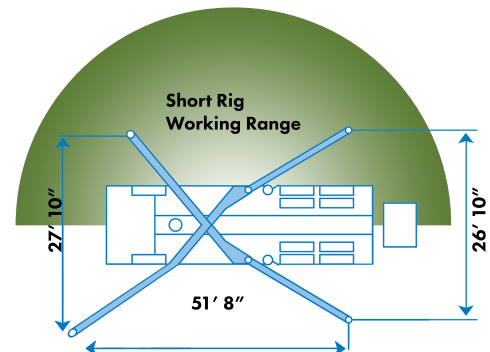
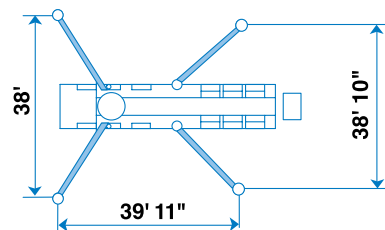
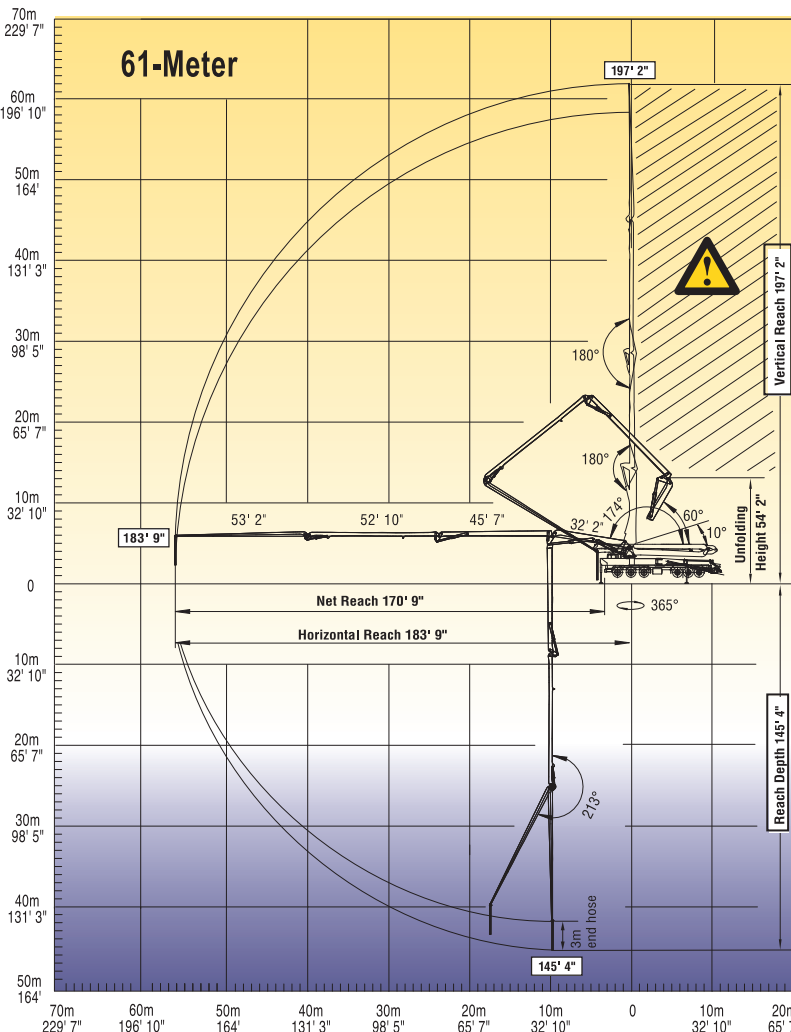
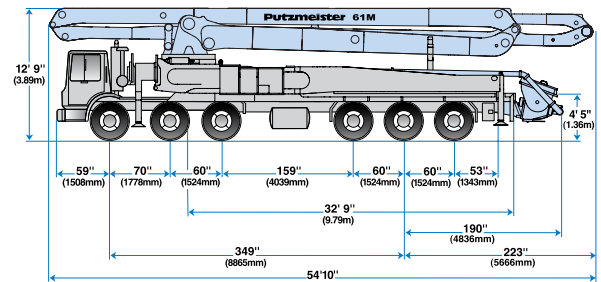
1st section length	32' 2"
2nd section length	45' 7"
3rd section length	52' 10"
4th section length	53' 2"
Maximum end hose length	10' 0"
Maximum end hose weight allowance	280 lbs

PMA provides a 3m single end hose. Follow end hose weight guidelines listed in operational manual.

.16H Pump Cell

Rod side output	210 yd ³ /hr
Piston side output	141 yd ³ /hr
Rod side pressure	1233 psi
Piston side pressure	1885 psi*
Concrete cylinder diameter	9"
Stroke length	83"
Rod side strokes per minute	31
Piston side strokes per minute	21

*Standard delivery line system rated at max line pressure 1233 psi. Maximum theoretical values listed





Specifications

Vertical Reach	197' 1"
Horizontal Reach	184' 6"
Below Grade Reach w/Tip Hose	149' 11"
Pipeline Diameter	4.5"
Boom Type/Sections	Overhead Roll & Fold/4
Boom Rotation	370°
Unfolding Height	59' 8"

Outrigger Type-Front:

Super X, Hydraulic Extension & Jacking

Outrigger Type-Rear:

Hydraulic Slewing & Jacking

Outrigger Soil Pressure w/o Dunnage (front/rear) 760/739 psi

Outrigger Soil Pressure w/Dunnage (front/rear) 67/65 psi

Outrigger Width, Front 29' 2"

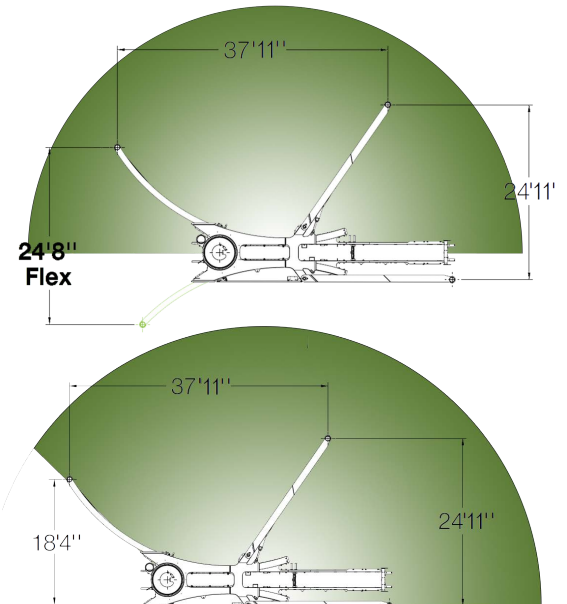
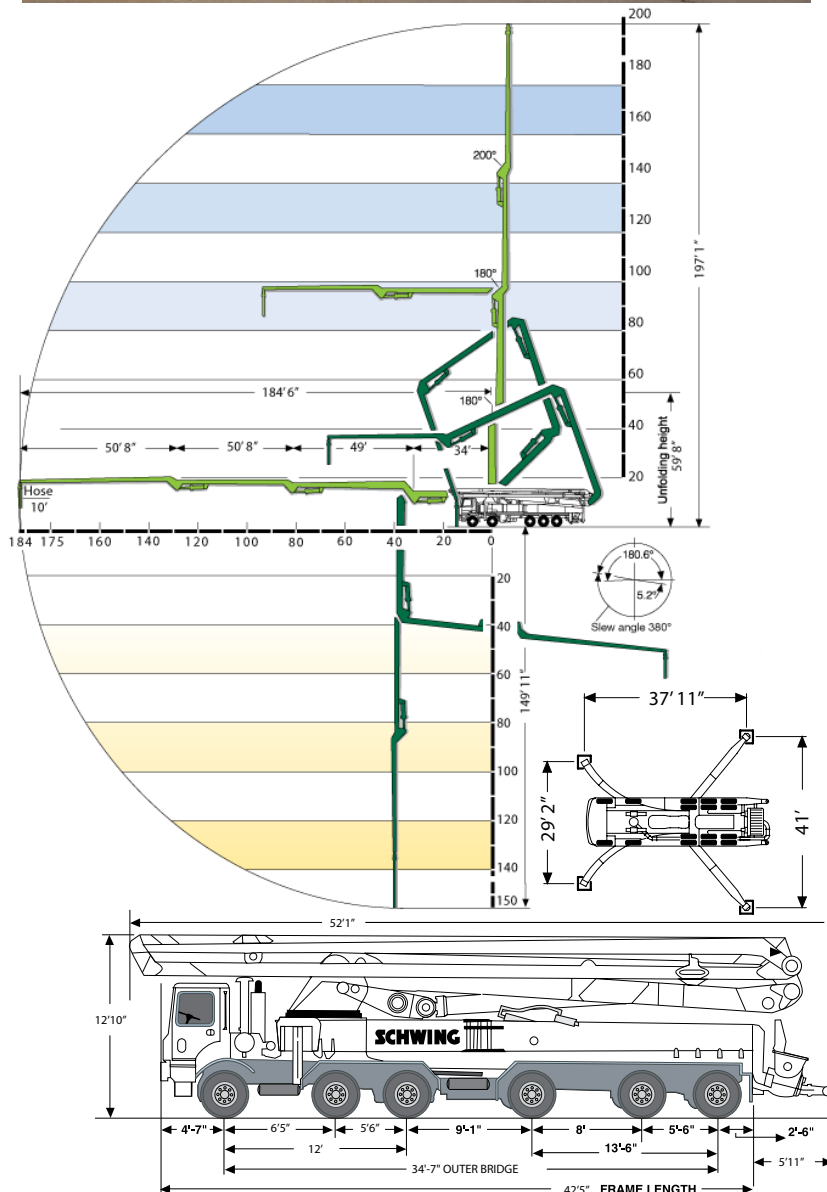
Outrigger Width, Rear 41'

Outrigger Length 37' 8"

Pump Specifications

Theor. Concrete Output	213 yd ³ /hr
Max. Pressure on Concrete	1169 psi
Max. Strokes Per Minute	22
Max. Aggregate Size	2.5"
Material Cylinder Diameter	10"
Material Cylinder Stroke	98"
Differential Cylinder Diameter	4.7"
Maximum Oil Flow	158.5 gal/min
Hydraulic Circuitry Type	MPS
Valve Type	B Rock

Specifications are subject to change without prior notice.





Specifications

Vertical Reach	210' 9"
Horizontal Reach	196' 5"
Below Grade Reach w/Tip Hose	157'
Pipeline Diameter	5"
Boom Type/Sections	Articulating Overhead Roll & Fold/5
Boom Rotation	380°
Unfolding Height	50' 2"

Outrigger Type-Front: Super X Folding Outriggers, Fully Hydraulic, Extension & Jacking

Outrigger Type-Rear: Hydraulic Slewing & Jacking

Outrigger Soil Pressure w/o Dunnage (front/rear) 670/585 psi

Outrigger Soil Pressure w/ Dunnage (front/rear) 170.4/148.6 psi

Outrigger Width, Front 38'

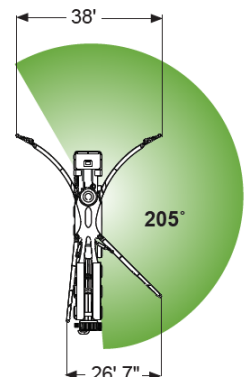
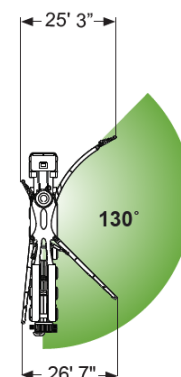
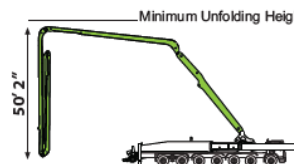
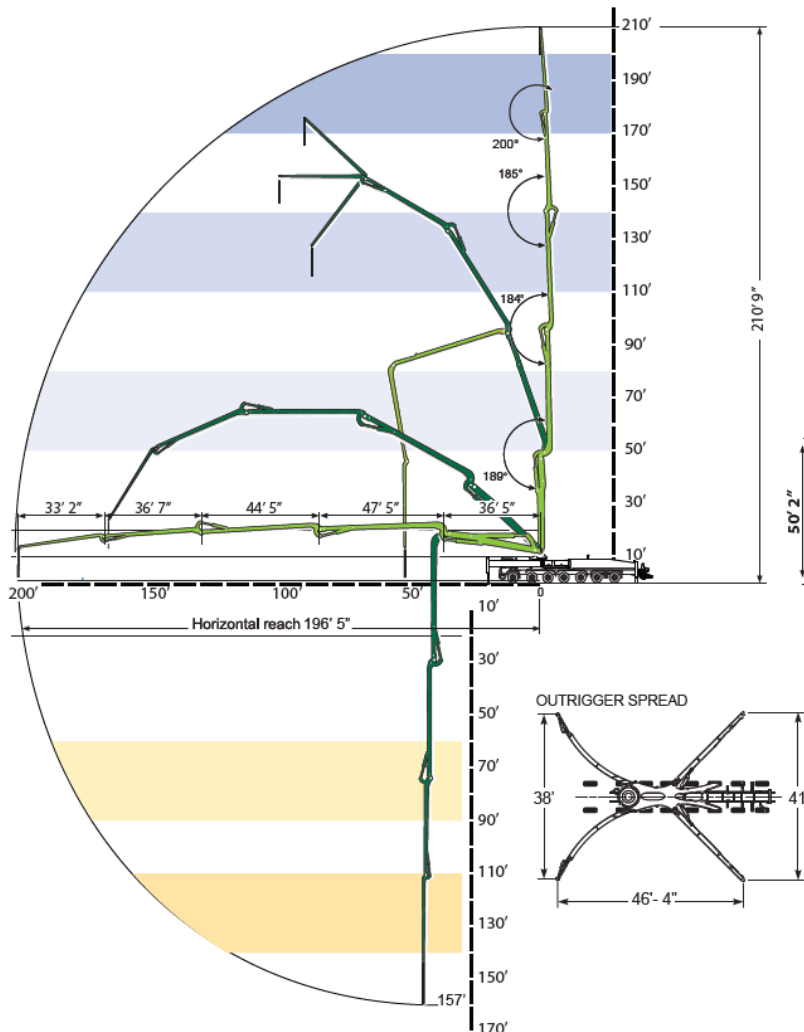
Outrigger Width, Rear 41'

Outrigger Length 46' 4"

Pump Specifications

Theor. Concrete Output	213 yd ³ /hr
Max. Pressure on Concrete	1169 psi
Max. Strokes Per Minute	22
Max. Aggregate Size	2.5"
Material Cylinder Diameter	10"
Material Cylinder Stroke	98"
Differential Cylinder Diameter	4.7"
Maximum Oil Flow	158.5 gal/min
Hydraulic Circuitry Type	MPS
Valve Type	B Rock

Specifications are subject to change without prior notice.



70Z-Meter

by Putzmeister



Model Overview

Vertical reach	227' 4"
Horizontal reach	212' 11"
Reach from front of truck	192' 3"
Reach depth	166' 4"
Unfolding height	80' 5"
Front tractor axle weight	36,689 lbs
Tandem tractor axle weight	48,241 lbs
Rear trailer axle weight	91,000 lbs
Total tractor weight	84,930 lbs
Approx total weight	175,932 lbs

Specifications subject to change without notice. Based on Model Kenworth C500B with .16H pump cell.

Boom Specifications • Z-Fold Design

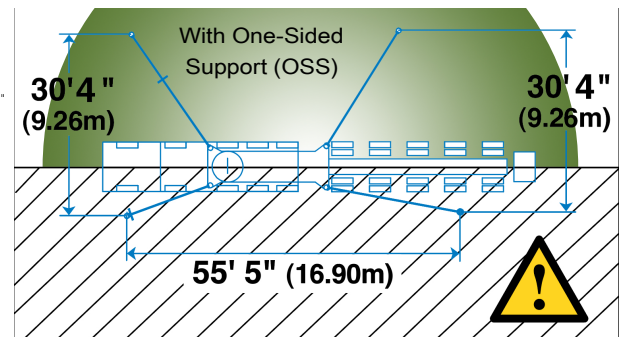
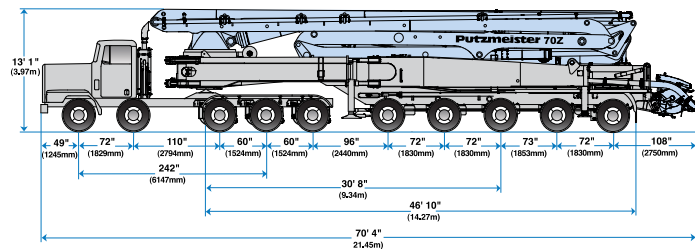
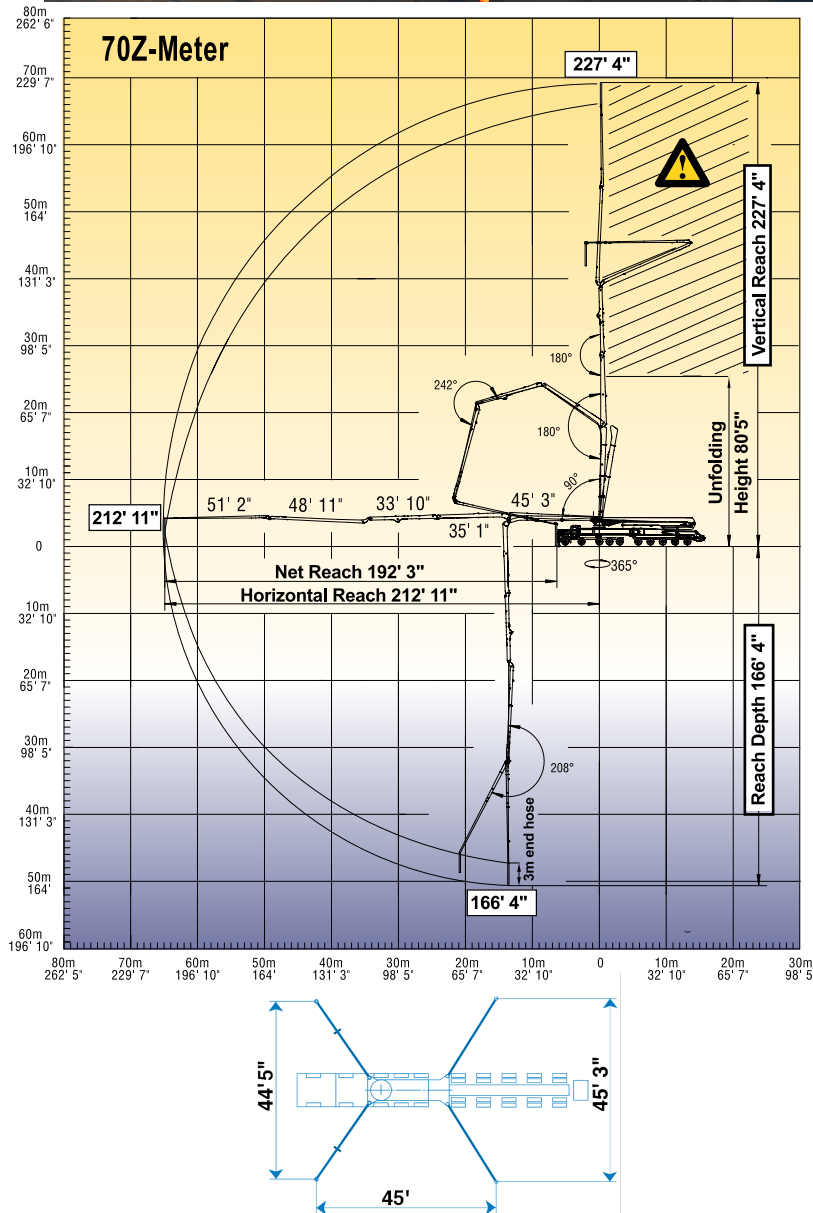
1st section length	45' 3"
2nd section length	35' 1"
3rd section length	33' 10"
4th section length	48' 11"
5th section length	51' 2"
Maximum end hose weight allowance	CF
Maximum end hose length	CF

PMA provides 3m single end hose. Follow end hose weight guidelines in operational manual.

.16H Pump Cell

Rod side output	210 yd ³ /hr
Piston side output	146 yd ³ /hr
Rod side pressure	1233 psi
Piston side pressure	1885 psi*
Concrete cylinder diameter	9"
Stroke length	83"
Rod side strokes per minute	31
Piston side strokes per minute	21

*Standard delivery line system rated at max line pressure 1233 psi.





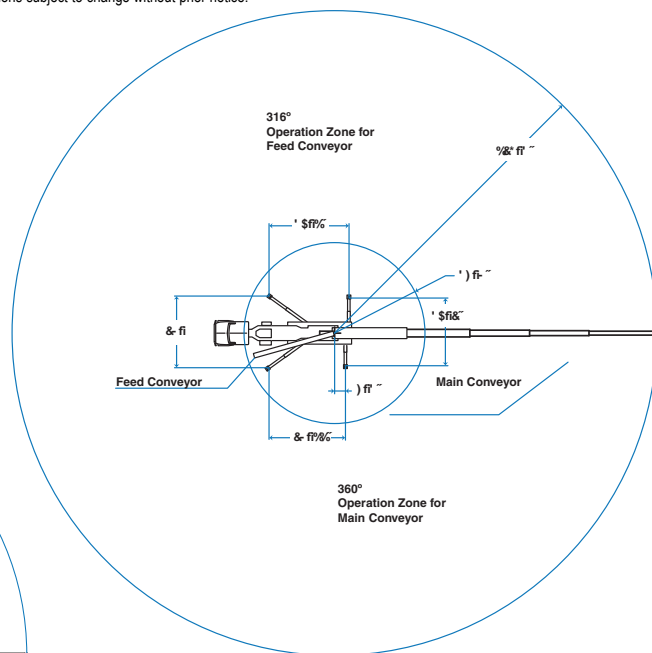
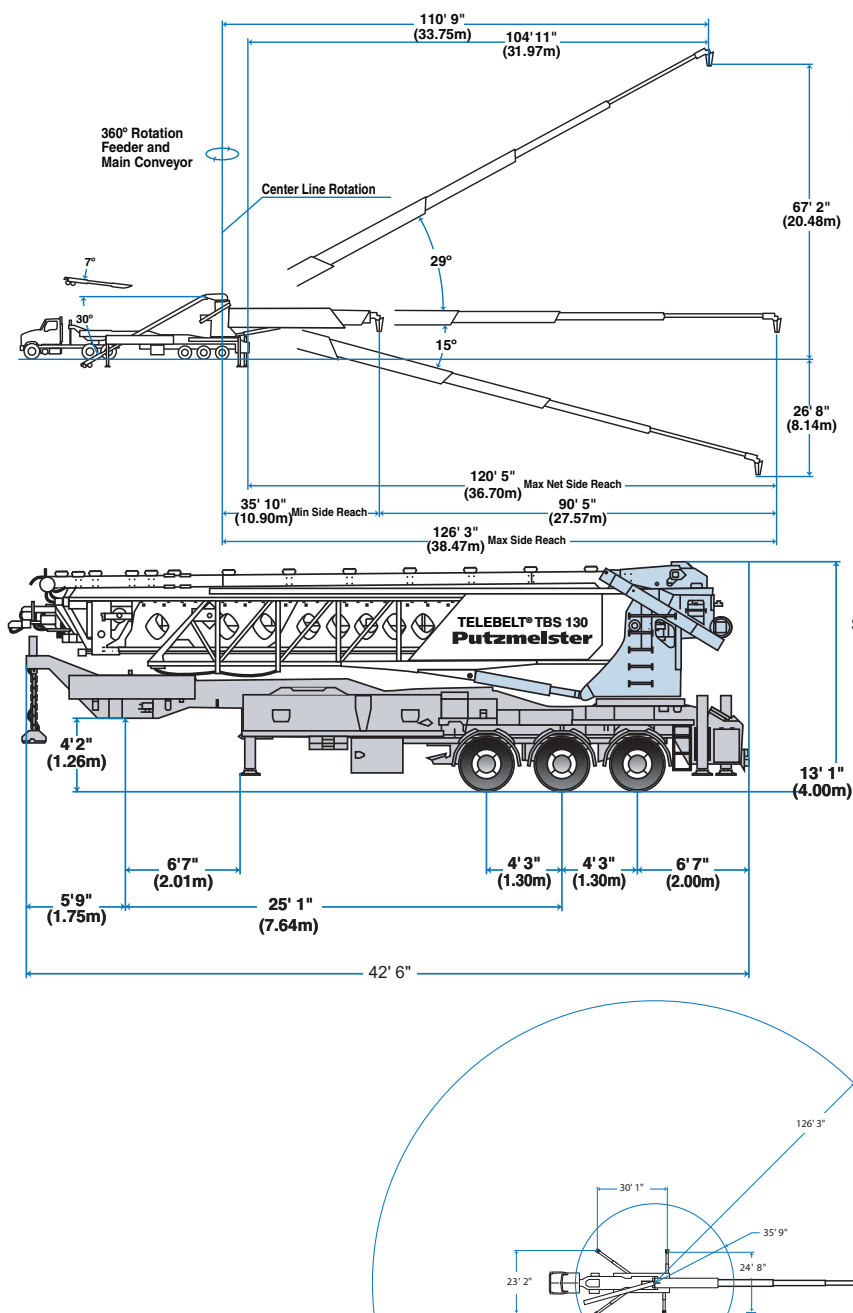
Conveyor horizontal reach –	
Maximum at 0°	126' 3"
Maximum at 29°	110' 9"
Conveyor belt width	18"
Feed conveyor length	38'
Feed conveyor belt width	18"
Trunk/end hose length	15'
Discharge height from grade –	
Maximum at 29°	68' 3"
Maximum at -15°	-25' 10"

Rated capacity at 0° Main & feed conveyors	5 yd ³ /min
Rated capacity up to 20° Main & feed conveyors	5 yd ³ /min

Net reach beyond outriggers: at 0°	120' 9"
Net reach beyond outriggers: at 30°	105'
Outrigger spread L - R	
Front hydraulically rotate out and down	27' 9"
Outrigger spread L - R	
Rear hydraulically rotate out and down	29'
Outrigger load: Front	37,320 lbf
Outrigger load: Rear	45,190 lbf

Steering	34,983 lbs
Tandem	43,308 lbs
Total	78,292 lbs

Specifications subject to change without prior notice.



SP 750-18

by SCHWING



Performance

Max volume output	70 yd ³ /hr
Max concrete pressure	1100 psi
Max aggregate size	1.5"

Technical Specs

Concrete Cylinder Diameter	7"
Differential Piston/Rod Diameter	3.54"/1.96"
Concrete Cylinder Stroke Length	39"
Max Strokes per Minute	42
Main Hydraulic Pump	A11VO130
Volume Control	0 to Maximum
Concrete Valve Type	Long Rock™
Shifting Cylinders	2
Hydraulic tank capacity	112 US gal
Hydraulic System	Open Loop
Hopper height	51"
Hopper capacity	13 ft ³
Outlet diameter	5"

Engine

Manufacturers' model - Tier 4 Final	CAT 3.4B 100hp/74.6Kw
Circuit Hydraulics	Twin Circuit: Accumulator
Fuel tank capacity	39 US gal

Trailer

Axle	Tandem Standard
Axle capacity	11,000 lbs
Tandem Axle Tire	ST 235/80 R16 (std.)
Brakes	Electric
Outrigger Legs	Manual Standard

Dimensions

Length	16' 5"
Width	6' 4"
Height	8' 6"
Trailer Units Weight - Tier 4 Final	8,850 lbs
Remote Control Cable	100

SP 750-18

